

italian  
quality



Made in Italy

Industria  
Leader

**SIRENA** S.p.A.

**Linea  
fari di  
illuminazione**

**Light beam  
signals**

**HVS.**

PRECONISATEUR DE SOLUTIONS DEPUIS 1985

2 rue René Laennec 51500 Taissy France  
Fax: 03 26 85 19 08, Tel : 03 26 82 49 29

E-mail: [hvssystem@hvssystem.com](mailto:hvssystem@hvssystem.com)  
Site web : [www.hvssystem.com](http://www.hvssystem.com)



Linea fari di illuminazione  
Light beam signals

317-324



Linea fari di illuminazione. Light beam signals

# Fari orientabili manualmente con luce alogena

## Halogen swivel light beams - manual orientation

V 12-24 (±10%)



IP 65

°C -30 +50

On ∞

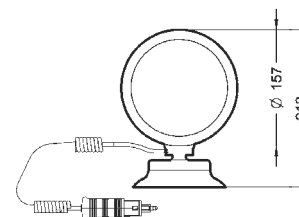
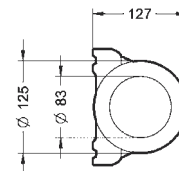


**FO 195 H1 MV**  
FO195H1MVD  
FO195H1MVP

55 56

FO195H1MVD12D 30003  
FO195H1MVD24D 29988

	<b>V</b> ---	12	24
	<b>A</b>	4.6	2.9
	<b>Cd (p)</b>	195.000	
H1 12V 55W LR H 55W 12 H1 24V 70W LR H 70W 24			



FO195H1MVP12D 30004  
FO195H1MVP24D 30005



Kg. 1,24

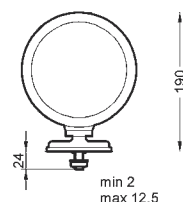
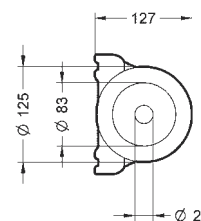


**FO 195 H1 B**  
FO195H1BD  
FO195H1BP

55 57

FO195H1BD12D 29976  
FO195H1BD24D 29978

	<b>V</b> ---	12	24
	<b>A</b>	4.6	2.9
	<b>Cd (p)</b>	195.000	
H1 12V 55W LR H 55W 12 H1 24V 70W LR H 70W 24			



FO195H1BP12D 29977  
FO195H1BP24D 29989



Kg. 0,97

Linea fari di illuminazione. Light beam signals

# Fari orientabili manualmente con luce allo xeno

## Swivel light beams with xenon light - manual orientation

V 12÷24 (±10%)	≡	IP 65	°C -30 +50	On ∞
----------------	---	-------	------------	------

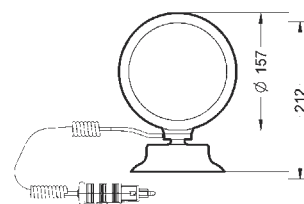
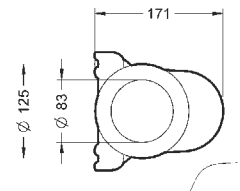


FO230HIDMVD12/24D 29985

**FO 230 HID MV**  
FO230HIDMVD  
FO230HIDMVP

55 56

 HID 35W LR HID 35W	V ≡	12÷24	
	A	3.3	1.65
	Cd (p)	230.000	



FO230HIDMVP12/24D 30006



Kg. 1,77

Linea fari di illuminazione. Light beam signals

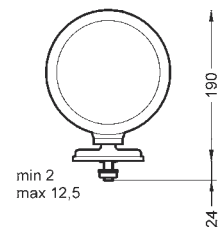
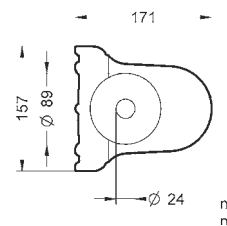


FO230HIDBD12/24D 29970

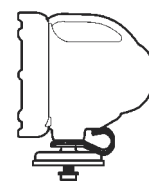
**FO 230 HID B**  
FO230HIDBD  
FO230HIDBP

55 57

 HID 35W LR HID 35W	V ≡	12÷24	
	A	3.3	1.65
	Cd (p)	230.000	



FO230HIDBP12/24D 29987




Kg. 1,49


# Fari di lavoro

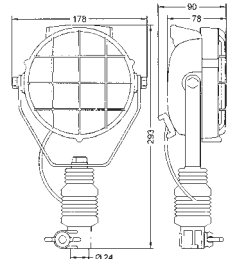
## Work beams

V 12-24 (±10%)	≡	IP 44	°C -30 +50	On ∞
----------------	---	-------	------------	------



	V ≡	12	24	<b>FDL M/D</b> <b>FDL A/D</b> <b>FDL P/D</b>
	A	4.6	2.9	
	Cd (p)	4000	4000	
	∠	26°		
H3 12V 55W H3 24V 70W				

	V ≡	12	24	<b>FDL M/P</b> <b>FDL A/P</b> <b>FDL P/P</b>
	A	4.6	2.9	
	Cd (p)	4000	4000	
	∠	5°		
H3 12V 55W H3 24V 70W				




FDLADH12D	28019	FDLADH24D	28031
FDLAPH12D	28018	FDLAPH24D	28030


Kg. 0,9

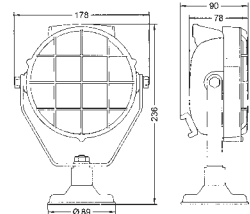
**FARO DI LAVORO A**  
**WORK BEAM A**  
**FDLA/DH**  
**FDLA/PH**

13 18 25 27



	V ≡	12	24	<b>FDL M/D</b> <b>FDL A/D</b> <b>FDL P/D</b>
	A	4.6	2.9	
	Cd (p)	4000	4000	
	∠	26°		
H3 12V 55W H3 24V 70W				

	V ≡	12	24	<b>FDL M/P</b> <b>FDL A/P</b> <b>FDL P/P</b>
	A	4.6	2.9	
	Cd (p)	4000	4000	
	∠	5°		
H3 12V 55W H3 24V 70W				




FDLMDH12D	28028	FDLMDH24D	28029
FDLMPH12D	28027	FDLMPH24D	28026


Kg. 1,2

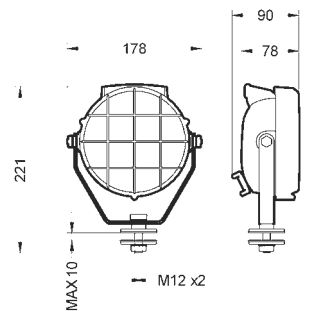
**FARO DI LAVORO M**  
**WORK BEAM M**  
**FDLM/DH**  
**FDLM/PH**

13 18 25 26



	V ≡	12	24	<b>FDL M/D</b> <b>FDL A/D</b> <b>FDL P/D</b>
	A	4.6	2.9	
	Cd (p)	4000	4000	
	∠	26°		
H3 12V 55W H3 24V 70W				

	V ≡	12	24	<b>FDL M/P</b> <b>FDL A/P</b> <b>FDL P/P</b>
	A	4.6	2.9	
	Cd (p)	4000	4000	
	∠	5°		
H3 12V 55W H3 24V 70W				



FDLPDH12D	29982	FDLPDH24D	29983
FDLPPH12D	28048	FDLPPH24D	28044

Kg. 0,76

**FARO DI LAVORO P**  
**WORK BEAM P**  
**FDLP/DH**  
**FDL P/PH**

13 18 25 40

Linea fari di illuminazione. Light beam signals

# Fari di lavoro con sensore crepuscolare

## Work beams with twilight sensor

V 20÷100	≡	IP 44	°C -30 +50	On ∞
----------	---	-------	------------	------

### Faro di lavoro con sensore automatico crepuscolare + CSW 20÷100V

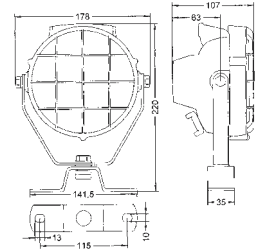
#### Work beam with twilight automatic sensor + CSW 20÷100V



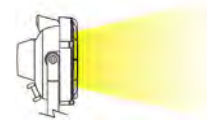
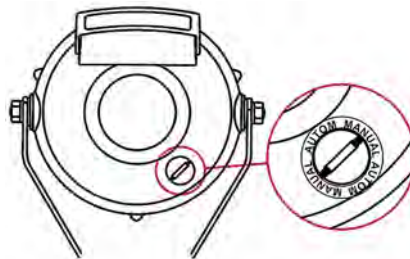
**KIT FMA N**  
KITFMAN  
⑬ ⑱ ⑲ ⑳ ㉑

 H3 12V 55W LR H3 55W 12	V ≡	20÷100
	A	3.2÷0.6
	V out	12V dc
	P out	max 60 W
	Cd (p)	4000

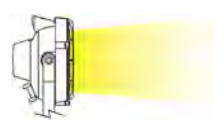
KITFMAND20100	28035
KITFMANP20100	28046



Kg. 1,4



**FDL D = LUCE DIFFUSA**  
DIFFUSED LIGHT



**FDL P = LUCE DI PROFONDITÀ**  
DEPTH LIGHT

### Faro di lavoro con sensore automatico crepuscolare + CSW 20÷100V + base DIN A + spinotto R

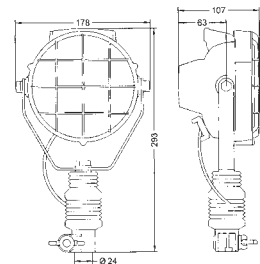
#### Work beam with twilight automatic sensor + CSW 20÷100V + DIN A base + adapter socket R



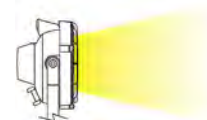
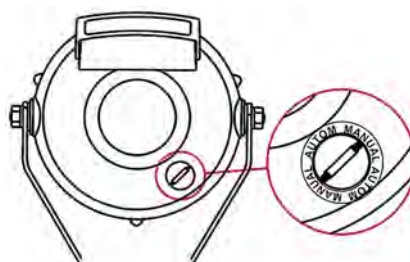
**KIT FMA A**  
KITFMAA  
⑬ ⑱ ⑲ ⑳ ㉑

 H3 12V 55W LR H3 55W 12	V ≡	20÷100
	A	3.2÷0.6
	V out	12V dc
	P out	max 60 W
	Cd (p)	4000

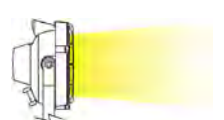
KITFMAAD20100	28036
KITFMAAP20100	28047



Kg. 1,5



**FDL D = LUCE DIFFUSA**  
DIFFUSED LIGHT



**FDL P = LUCE DI PROFONDITÀ**  
DEPTH LIGHT

# Fari di lavoro con sensore crepuscolare

## Work beams with twilight sensor

V 20÷100



IP 44

°C -30 +50

On ∞

**Faro di lavoro con sensore automatico crepuscolare + CSW 20÷100V + 1 magnete + CSP SAC + CKM**

**Work beam with twilight automatic sensor + CSW 20÷100V + 1 magnet + CSP SAC + plug-in socket with cap (CKM)**



**KIT FMA M**  
**KITFAM**

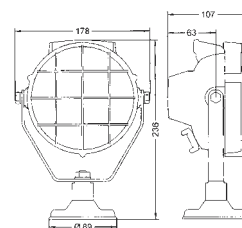
13 18 25 26

	<b>V</b>	20÷100
	<b>A</b>	3.2÷0.6
	<b>V out</b>	12V dc
	<b>P out</b>	max 60 W

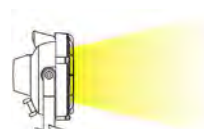
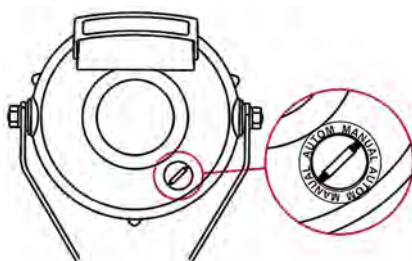
H3 12V 55W  
LR H3 55W 12

**Cd (p)**  
4000

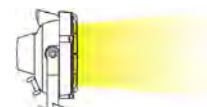
KITFMAMD20100 28037  
KITFMAMP20100 28045



Kg. 1,7



**FDL D = LUCE DIFFUSA**  
DIFFUSED LIGHT



**FDL P = LUCE DI PROFONDITÀ**  
DEPTH LIGHT

V 20÷100



On ∞

IP 55

°C -30 +50

**Convertitore di tensione DC-DC**  
**Voltage converter DC-DC**

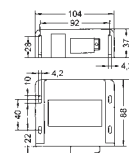


**CONVERTITORE SWITCHING**  
**CONVERTER SWITCHING**  
**CSW20/100V**

16

<b>V</b>	20÷100
<b>A</b>	3.2÷0.6
<b>V out</b>	12V dc
<b>P out</b>	max 60 W

CSW20100 84596



Kg. 0,45

# Fari orientabili elettricamente

## Swivel light beams - electrically powered

V 12-24 (±10%)



IP 55

°C -30 +50

On ∞

6 PC HT

**Faro orientabile con comando a distanza via radio (FORC S) o via cavo (FOTC S)**  
**Swivel light beam operated at a distance by a radio (FORC S) or by a cable (FOTC S)**

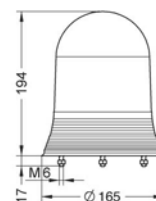


**FORC S B**  
**FOTC S B**

13 65

	<b>V</b> ---	12	24
	<b>A</b>	4.6	2.9
	<b>Cd (p)</b>	120.000	

FORCSBDH55W12D	45000	FOTCSBDH55W12D	45008
FORCSBPH55W12D	45001	FOTCSBPH55W12D	45009
FORCSBDH70W24D	45002	FOTCSBDH70W24D	45010
FORCSBPH70W24D	45003	FOTCSBPH70W24D	45011



Kg. 1,10

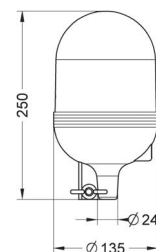


**FORC S A**  
**FOTC S A**

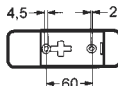
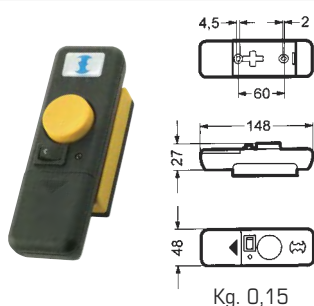
13

	<b>V</b> ---	12	24
	<b>A</b>	4.6	2.9
	<b>Cd (p)</b>	120.000	

FORCSADH55W12D	45012	FOTCSADH55W12D	45020
FORCSAPH55W12D	45013	FOTCSAPH55W12D	45021
FORCSADH70W24D	45014	FOTCSADH70W24D	45022
FORCSAPH70W24D	45015	FOTCSAPH70W24D	45023

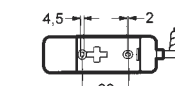


Kg. 0,95



**Radiocomando (FORC)**  
Remote control by radio (FORC)

Kg. 0,15



**Telecomando (FOTC)**  
Remote control by wire (FOTC)

Kg. 0,15

**FORC S con griglia**  
**FORC S with grid**

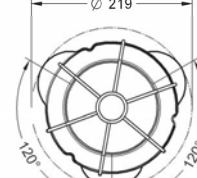
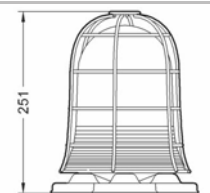


**BDFORCSM**

13 65 17

	<b>V</b> ---	12	24
	<b>A</b>	4.6	2.9
	<b>Cd (p)</b>	120.000	

BDFORCSMDH55W12D	45032
BDFORCSMPH55W12D	45033
BDFORCSMDH70W24D	45034
BDFORCSMPH70W24D	45035

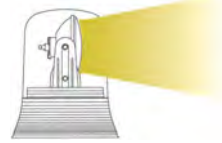


Kg. 2,90

**B3M**

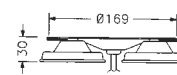


**P = LUCE DI PROFONDITÀ**  
DEPTH LIGHT



**D = LUCE DIFFUSA**  
DIFFUSED LIGHT

B3M 83152



Kg. 1,15

Linea fari di illuminazione. Light beam signals



# Fari orientabili elettricamente

## Swivel light beams - electrically powered

V 12-24 (±10%)		IP 67	°C -30 +50	On ∞	6	PC HT
----------------	--	-------	------------	------	---	-------

### Faro radiocomandato per impiego marino

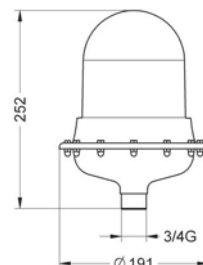
### Radio controlled waterproof light beam for marine application



**FORC INOX S**  
STFORCS  
(10)

	V	12	24
	A	4.6	2.9
	Cd (p)	120.000	

STFORCSDH55W12D 45040  
STFORCSPH55W12D 45041  
STFORCSDH70W24D 45042  
STFORCSPH70W24D 45043



Kg. 2,26

V 12-24 (±10%)		IP 55	°C -30 +50	On ∞	6	PC HT
----------------	--	-------	------------	------	---	-------

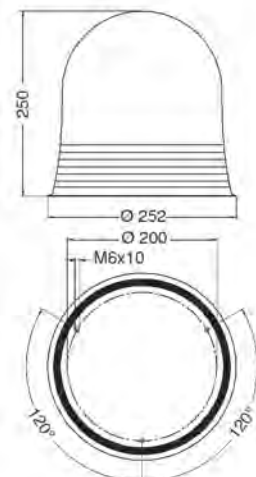


**B2 FORC S B H1 100W**  
B2FORCSBH100W  
(65) (66)

**B2 FOTC S B H1 100W**  
B2FOTCSBH100W  
(65) (66)

	V	12	24
	A	6.6	3.3
	Cd (p)	195.000	

B2FORCSBDH100W12D 45048  
B2FORCSBPH100W12D 45049  
B2FORCSBDH100W24D 45050  
B2FORCSBPH100W24D 45051  
B2FOTCSBDH100W12D 45056  
B2FOTCSBPH100W12D 45057  
B2FOTCSBDH100W24D 45058  
B2FOTCSBPH100W24D 45059



Kg. 2,30

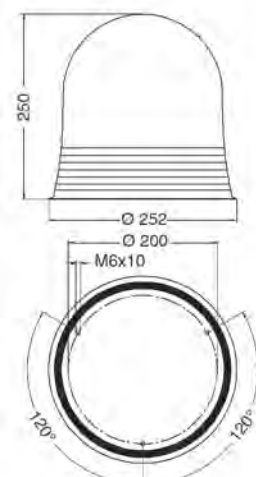


**B2 FORC S B HID**  
B2FORCSBHID  
(65) (66)

**B2 FOTC S B HID**  
B2FOTCSBHID  
(65) (66)

	V	12÷24	
	A	3.3	1.65
	Cd (p)	230.000	

B2FORCSBDHID12D 45060  
B2FORCSBPHID12D 45061  
B2FORCSBDHID24D 45062  
B2FORCSBPHID24D 45063  
B2FOTCSBDHID12D 45068  
B2FOTCSBPHID12D 45069  
B2FOTCSBDHID24D 45070  
B2FOTCSBPHID24D 45071



Kg. 2,77

Linea fari di illuminazione. Light beam signals

## Fari di ricerca portatili

### Portable search beams

<b>V</b> 12 Tensione di ricarica Recharge voltage	<b>IP</b> 65	<b>°C</b> -30 +50
(Batt. Pb 12V 4500 mAh)	<b>Tempo max. di ricarica</b> Max. recharge time	240 min.

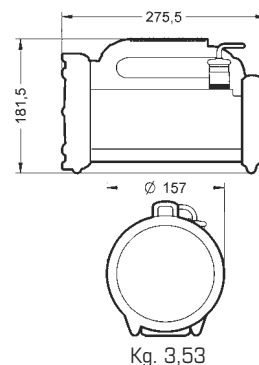
#### Faro di ricerca autoalimentato portatile con luce alogena e segnalatore posteriore a led Battery operated portable search beam with halogen light and rear led signalling indicator



**BILIGHT**  
BILIGHT  
52 53 54

	<b>V</b> 12
	<b>Cd (p)</b> 195.000
H1 12V 55W LR H 55W 12	<b>On</b> 30 min.
	<b>V</b> 12
LED ○	<b>Cd (p)</b> 65
	<b>On</b> 600 min.

BILIGHTDNERO12D 76144  
BILIGHTPNERO12D 76145



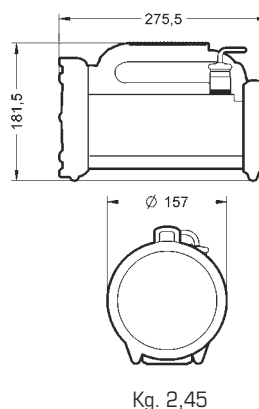
#### Faro di ricerca autoalimentato portatile con luce alogena Battery operated portable search beam with halogen light



**FPHH1**  
FPHH1  
52 53 54

	<b>V</b> 12
	<b>Cd (p)</b> 195.000
H1 12V 55W LR H 55W 12	<b>On</b> 30 min.

FPHH1DNERO12D 76165  
FPHH1PNERO12D 76166



<b>V</b> 12 Tensione di ricarica Recharge voltage	<b>IP</b> 65	<b>°C</b> -30 +50
(Batt. Pb 12V 4500 mAh)	<b>Tempo max. di ricarica</b> Max. recharge time	240 min.

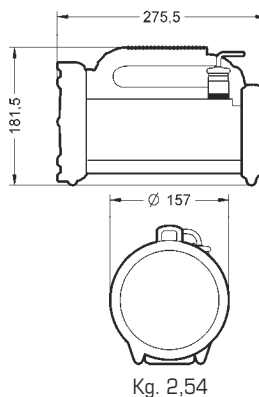
#### Faro di ricerca autoalimentato portatile con luce alogena e sirena Battery operated portable search beam with halogen light and siren



**FPSSH1**  
FPSSH1  
52 53 54

	<b>V</b> 12
	<b>Cd (p)</b> 195.000
H1 12V 55W LR H 55W 12	<b>On</b> 30 min.
	<b>V</b> 12
dB(A)1m	107/110
	<b>Hz</b> 2650/2950

FPSSH1DROSSO12D 76152  
FPSSH1PROSSO12D 76153

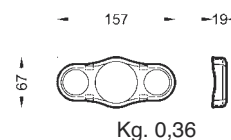


#### Cinghia per tracolla ad aggancio rapido con chiusura a strozzo in dotazione Quick clip on shoulder strap with blocking closure supplied



**BM3ND**

BM3ND 72473



Kg. 0,36

Altri colori disponibili a richiesta. Other colours available on request.